



Modula Diamond Phoenix

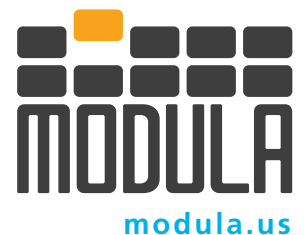
Think Productivity, Think Modula

★ PROUDLY ★



MADE IN USA

from US & Imported Components



Boost productivity and accuracy in your order picking operation.

Modula Diamond Phoenix Horizontal Carousels are the ideal solution for high speed picking operations. Horizontal Carousels consist of carriers that are supported on an oval track that deliver stored goods to the picker. To increase throughput, two or more carousels (known as a pod) are often integrated with a workstation that is configured with batch picking software and pick-to-light. Productivity can be increased by up to 65% with the Modula Diamond Phoenix Horizontal Carousel.

Before Modula



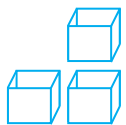
After



Increase
Productivity



Up To **65%**



1. RECOVER SPACE



2. INCREASE SECURITY



3. SAVE TIME



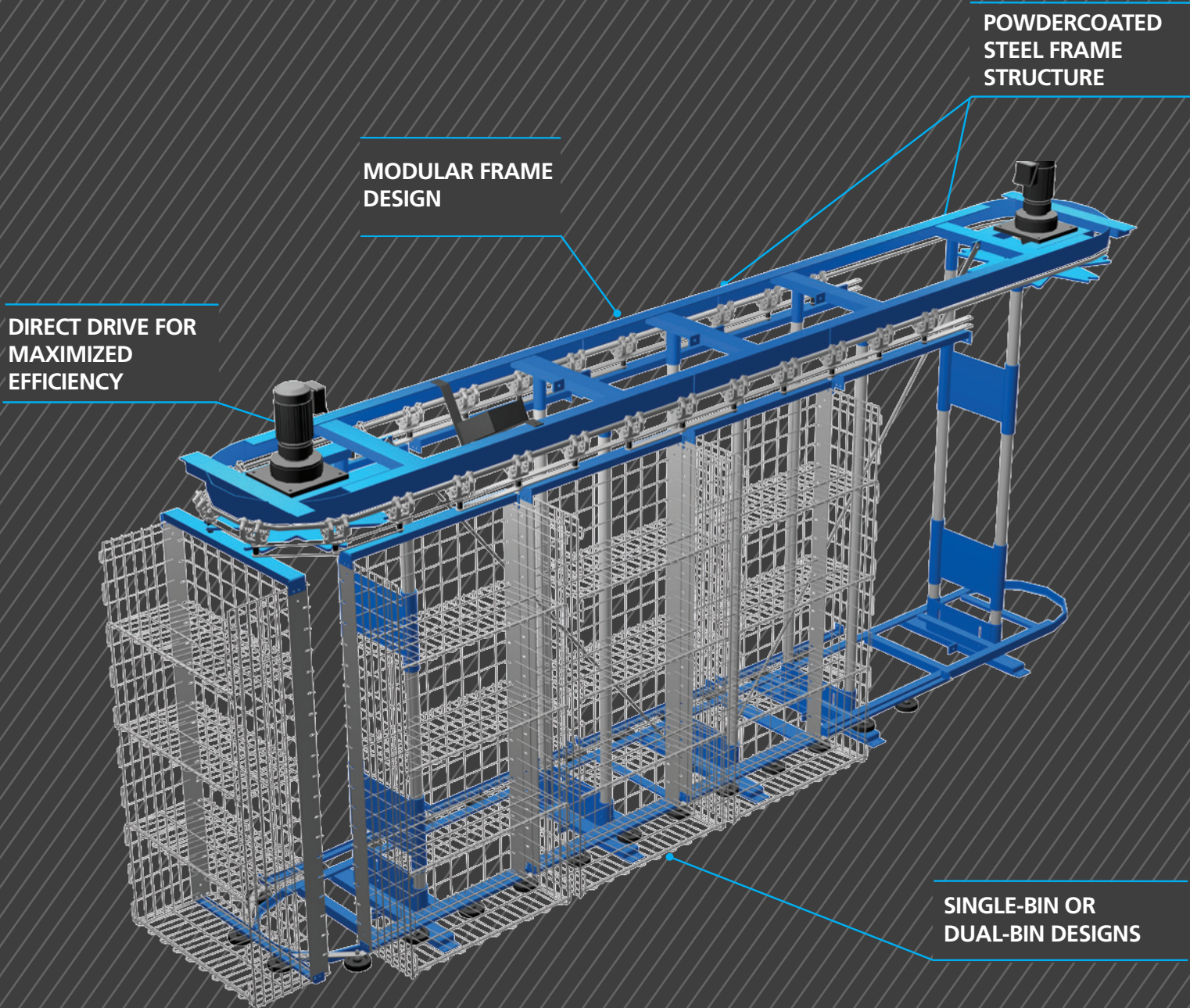
4. IMPROVE ACCURACY



5. REDUCE RISKS



6. BOOST INVENTORY
MANAGEMENT



**POWDERCOATED
STEEL FRAME
STRUCTURE**

**MODULAR FRAME
DESIGN**

**DIRECT DRIVE FOR
MAXIMIZED
EFFICIENCY**

**SINGLE-BIN OR
DUAL-BIN DESIGNS**

Technical highlights

Qty. of bins possible: from 11 to 90 bins on standard configurations

Bin types available: standard or dual-bin

Unit arrangements possible: pod based up to 4 units per pod, stacked up to 3 tiers high

Unit heights: from 7'-10" to 13'-10"

Unit widths: from 65.5" to 75.9"

Unit lengths: from 13'-9" to 150'-6"

Bin heights: 6' to 12' tall standard, special heights on request

Bin widths: 24.5" & 36"

Bin depths: 18" to 22"

Bin shelf spacing adjustability: 2", 3", and 4" standard available

Net bin payload capacities: up to 1,500 lbs per bin on standard configurations

Net unit load capacity: 135,000 lbs

Minimal energy consumption: high efficiency direct drive design with single or dual drives depending on configuration

Powdercoated steel frame structure & bins/shelves

Stainless steel track in standard or solid designs for superior durability

Light directed picking

The Modula Diamond Phoenix Horizontal Carousel is easily configured with light displays to effectively communicate messages between the software and operator.

Modula WMS software suite

Modula WMS is a fully featured warehouse management software that can easily be used to manage the space and utilization of Modula units, or as a standalone software tool. It can easily be interfaced with nearly any ERP system.

Work stations

An integral part of our horizontal carousels system design is the work station. With a broad choice of modular components and options, our cost effective workstation can be configured specifically for your operator's tasks - from high speed picking and putting to scanning, kitting, ticketing, bagging, labeling, weighing, logging, packing, inspecting and more. Easy to adjust or reconfigure as your needs change, it's the industry's most versatile, flexible workstation ever offered.

Operator safety

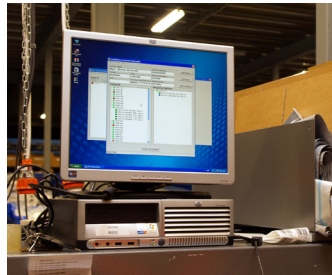
All Modula units are equipped with physical and optical safety barriers in order to ensure a 100% safe environment to operators.

Infinite configurations

Our Horizontal Carousels are designed to be completely flexible. Carousels can be used as a stand alone unit or arranged in multiple pods and can even be triple or double stacked; all depending on your operations requirements. Bins also have flexible configurability, coming in a wide range of heights, widths, and shelf designs.



LIGHT DIRECTED PICKING



MODULA WMS SOFTWARE



FLEXIBLE WORK STATIONS



DOUBLE STACKED CONFIGURATION

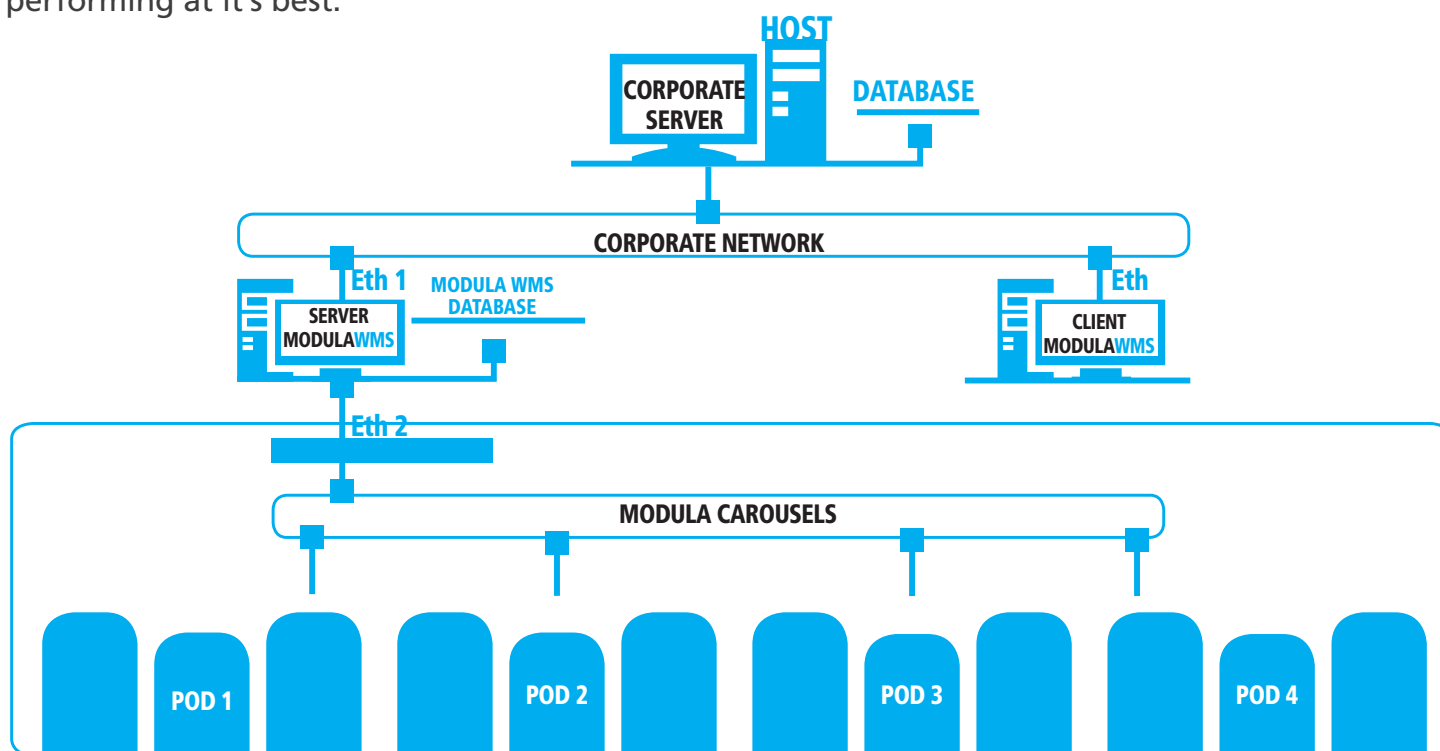
Batch picking

Batch picking is common in horizontal carousel pods. Batch picking allows an operator to fill multiple orders at one time. Using inventory management software, an operator can create a batch of orders and fill them all at one time. When the horizontal carousel presents a SKU for picking to the operator, the operator picks the total SKU quantity for all orders, and distributes the SKU quantity among all of the orders in the batch. Using batch picking, the operator only visits a SKU location one time during picking, creating efficiencies. Batch picking multiple orders at one time can increase productivity by up to 65%.



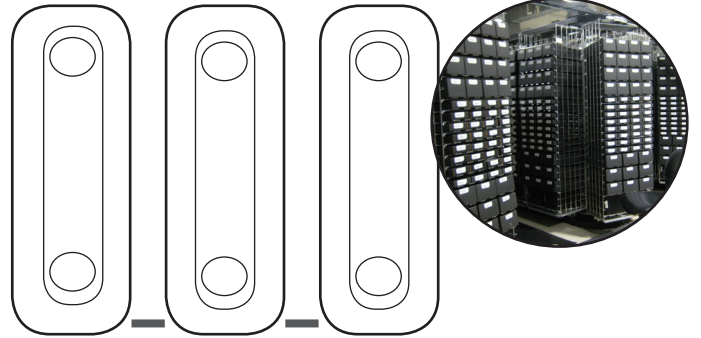
Modula WMS software

For the integrated management and control of Modula automated storage technologies, Modula has developed the Modula WMS software. With the use of software you are able to track inventory and increase productivity in your operation. Modula WMS facilitates batch picking allowing the operator to fill multiple orders at one time. With higher order volume, multi-user picking can provide further flexibility and productivity. WMS software can simply and effectively communicate with multi-users and integrate the use of pick-to-light, bar code scanners, and printers to keep your operation performing at it's best.



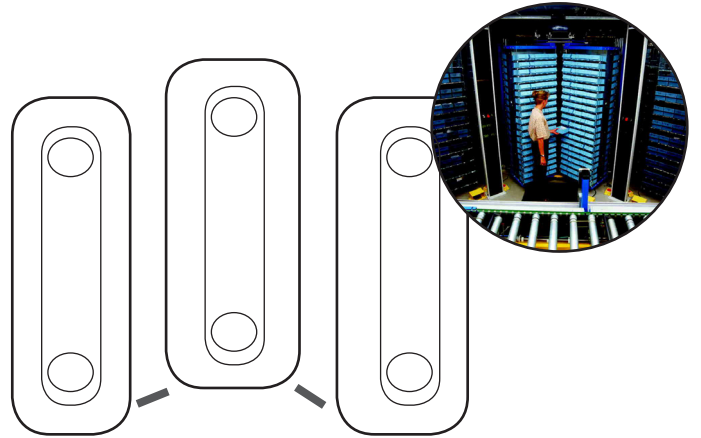
Podless

The Modula Diamond Phoenix Horizontal Carousel can be used in flexible zones to allow for resource increases/decreases based on seasonal requirements.



Pod

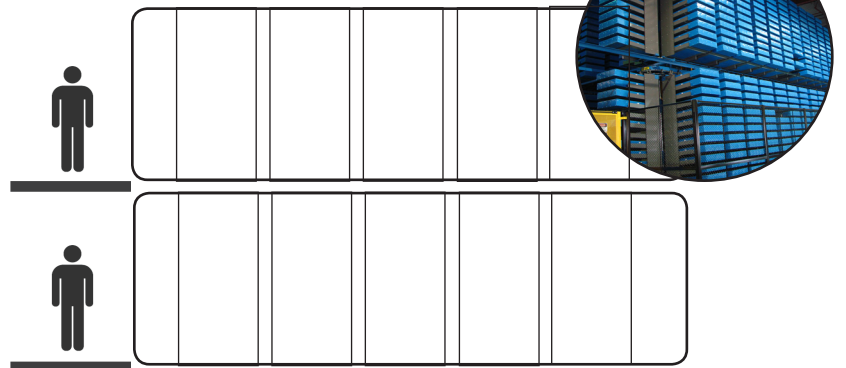
A pod is two or more horizontal carousels used in an integrated workstation with software and pick to light technology. While the operator picks from one horizontal carousel in the pod the other is pre-positioning the next pick so the operator has minimal downtime. In a horizontal carousel pod a pick is always ready and the operator is rarely waiting.



Stacked

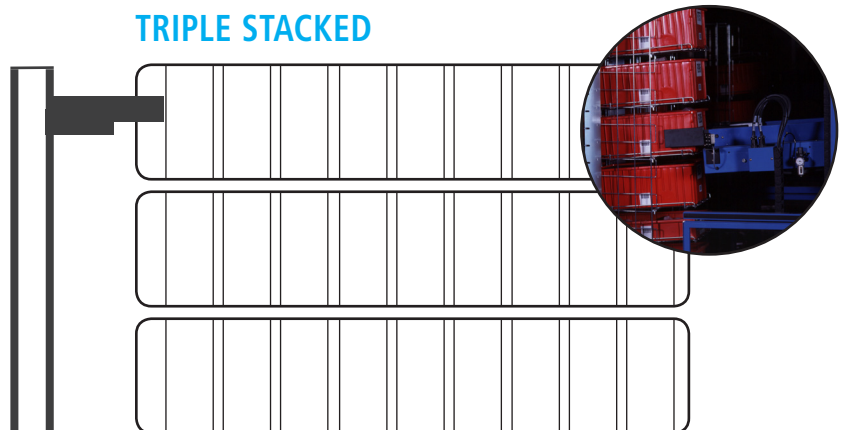
The Modula Diamond Phoenix Horizontal Carousels are designed with a modular frame construction to allow up to four carousels to be stacked. Double stacked carousels are typically used in conjunction with mezzanine to allow two levels of operator picking.

DOUBLE STACKED



Remote picking with our Inserter/Extractor can produce the highest throughput in the industry, with upwards of 360 transactions per hour. It is the perfect complement to triple stacked carousels.

TRIPLE STACKED



Our REFERENCES

Accessories

Black&Decker	USA
Colgate Palmolive Company	USA
Costan	Italy
Cristian Lay	Spain
Deny Fontaine	France
Dewalt	USA
GGB	USA
Incold	Italy
Maria Galland	Germany
Osram	Mexico/Italy
Seco Tools	France

Administrative/Public/Army

A.O.U. Ospedali Riuniti Di Trieste	Italy
US Army / Airforce / Navy	USA
GOZ Obukhov State Plant	Russia
Guardia di Finanza	Italy
National Institutes of STDS	USA
NHS National Services Scotland	Great Britain

Aeronautic

Barry Controls Aerospace	USA
Bombardier	Germany
Dassault Aviation	France
Embraer	Brazil
Eurocopter	France
Israel Aerospace Industries	Israel
JPR	France
Krasny Oktyabr	Russia
Lufthansa	China
TFI	France

Automotive

Automobili Lamborghini	Italy
Axletech	France
Betamotor	Italy
Brembo	Italy/Poland/China
Caterpillar	USA
Chrysler	Mexico
CNH Industrial (FIAT)	Spain/Belgium
Continental	Germany/Romania/Serbia
Daimler	Germany
Ferrari	Italy
FIAT	Italy/Serbia
Ford	Spain
Goodyear	Germany
Iveco (FIAT)	Spain
John Deere	USA
Renault	France
New Holland Tractor (FIAT)	Holland
Pagani Automobili	Italy
Porsche	Germany
Volkswagen	Germany/China

Biomechanical/Biomedical Industry

Biotec	Italy
Fatro SPA	Italy
Medison co.	Korea
Merit Medical Systems	USA
Neodent	Brazil
Steris Corporation	USA
Symrise	USA
Synthes	USA

Construction Industry

Aluplast	Italy
I.K.O.	Canada
Saint Gobain	USA
Wilo SE	Germany

Ceramic Industry

Cooperativa Ceramica di Imola	Italy
Euroceramique	Spain
Kajaria Ceramics	India
Pamesa Ceramica	Spain
Porcelanosa Group	USA
Sacmi	Italy/Mexico
Serenissima Ceramiche	Italy
Tecnografica	Italy

Chemical

Akzo Nobel	Italy
BASF	Spain
Dupont	USA
Firmenich	Switzerland
Grupo AC Marca	Spain
Infracor GmbH	Germany
Wacker Chemie	Germany

Electrical/Electronic Industry

ABB	Estonia
Disano Illuminazione	Italy
Emerson Industrial Automation	Brazil
ETI	Slovenia
Johnson Controls	Germany
Kemet	Mexico
Moog	Italy
Rexroth Bosch Group	Germany/Russia
Siemens	USA/Germany/Mexico
Staubli	France
Tyco Electronics	Mexico

Food Industry

Acetaia di Modena	Italy
Beam Global	Spain
Contri Spumanti	Italy
Damm	Spain
Marchesi Antinori	Italy
Mars	USA
Nestle	Great Britain
Pepsi Corporation	USA
Spendrups	Sweden
Vonpar Refrescos	Brazil
Yoplait (General Mills)	France

Furnishing

Alexandria Mouldings	USA
Edilkamin	Hungary
Franke	Italy
Immergas	Italy

Hydraulic/Oledynamic/Pneumatic Industry

Dicsa	Spain
Festo Pneumatics	Mexico
Hawe Hydraulics	USA/China
HP Hydraulics	Italy
IMM Hydraulics	Italy/Great Britain
Mono Pumps	Great Britain
Sag/Sagom Tubi	Italy

Mechanical/Manufacturing

Bonfiglioli Riduttori	Italy
Comau	Italy/Romania
Fanuc Robotics	Italy
Fliegl	Germany
Honeywell Garrett	Italy/Romania
IMA Industries	Italy
KBA Konig&Bauer	Germany
Marchesini Group	Italy
Otis	Italy
Rodo-ketten	Germany
Su-matic	Italy
Thyssenkrupp	Brazil/China
Vesuvius	Germany

Paper Industry/Publishing

Crane&Co	USA
Irving Tissue	USA
MPO	France
Rocktenn Preprint	Canada
SICPA	Brazil
Sofidel	Italy/France

Pharmaceutical

Abbott	France
Amgen	USA
Bayer	Mexico
Cooper Vision	USA
Fresenius Kabi	Italy
GlaxoSmithKline	USA
Janssen Pharmaceutical	Belgium
Johnson & Johnson	USA
Roche	Italy

Plastic Industry

Lavel Gomma	Italy
Schwartz GmbH	Germany
Trelleborg	Great Britain/China
Vision Extrusion	Canada

Energy Industry

Babcock & Wilcox	USA
BP British Petroleum	Great Britain
Conoco Phillips	USA
Dow-Kokam	USA
Duke Energy	USA
Nordex Energy GmbH	Germany
Petrobras	Brazil
Schlumberger	Mexico

Logistics/Transport Industry

AVTO LOGISTIKA	Russia
CSX Transportation	USA
DB Service GmbH	Germany
Infrabel Railway	Belgium
Kuhne + Nagel	Spain/France
MTA Metro North Railroad	USA

Textile Industry/Clothing Industry

Cotton Republic	Mexico
Giorgio Armani Operations	Italy
Jeans Knit PVT Ltd	India
Max Mara Group	Italy
Valentino	Italy



Modula is present in 5 continents with dealers and branches located in over 30 countries.

MODULA US HEADQUARTERS

90 Alfred A. Plourde Parkway
Lewiston, ME 04240
Tel. + 1.888.233.6796
Fax + 1.207.786.0271
info@modula.us
www.modula.us

MODULA ITALY HEADQUARTERS

Via San Lorenzo, 41 - 42013
Salvaterra di Casalgrande (Re) ITALY
Tel. +39 0522 774111
Fax +39 0522 774175
info@modula.eu
www.modula.eu

Modula is part of



All information provided in this catalogue is for informative purposes only and is not binding. Modula reserves the right to change information in this catalogue at any time. Modula will not accept liability for or guarantee the accuracy of the information contained herein.